



Gillam Manitoba, 1931
#000045

(Source: Library & Archives Canada, PA088594)

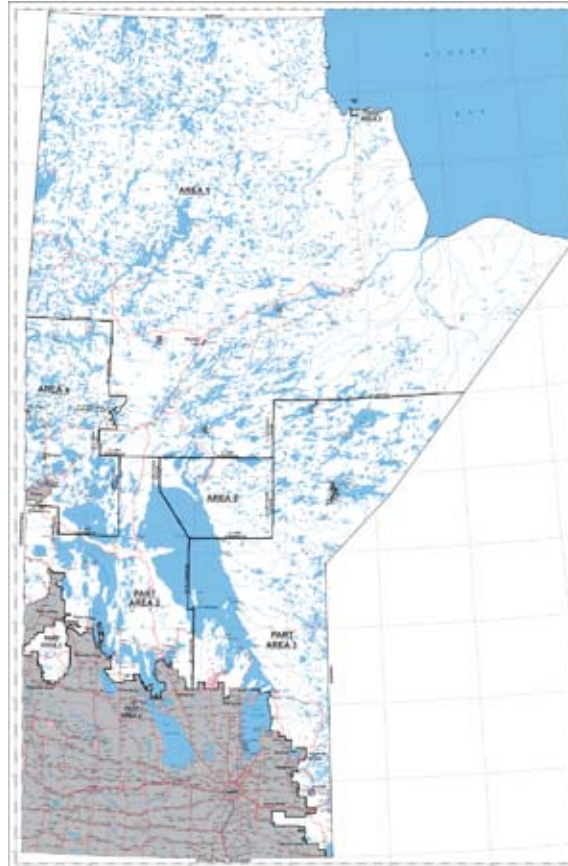
A unique resource

The FSD Photo Archive is unique in its focus on the Hudson Bay Railway and FSD communities; therefore, it is an invaluable resource to anyone interested in the history and culture of those communities. Community members who are researching their locality, for example, may find the FSD Photo Archive more accessible than other archival sources.

Check your school library's reference section for the FSD Photo Archive binder, which features thumbnail images as well as a comprehensive index to make finding specific images a breeze.

A rotating image gallery and other documentation of particular interest to FSD teachers, students and community members will soon be posted on the newly restructured Social Studies/Native Studies website:

http://ss_ns.frontiersd.mb.ca
Visit it often!



For more information, contact:

Frontier School Division,
Library Services,
1402 Notre Dame Ave.
Winnipeg, Manitoba
R3E 3G5

Phone: (204) 775-9741

Fax: (204) 775-9940

Donations of photographs to the
FSD Photo Archive are much appreciated.

To make a donation, please contact:

Louise Marleau

Phone: (204) 775-9741 extension 256

email: lmarle@frontiersd.mb.ca



Frontier School Division
Photo Archive Project*
2007



Surveyors' Camp, Hudson Bay Railway
proposed route, Survey Party #4,
Manitoba 1908-1909
#000114

(Source: Library & Archives Canada, PA147465)

* This project was made possible through a grant from Manitoba Culture, Heritage & Tourism's Heritage Grants Program.

What is the FSD Photo Archive Project?

Initiated by the Social Studies/Native Studies Department of Frontier School Division (FSD), the FSD Photo Archive project is a repository of photographs, maps and other documents that pertain to the history and heritage of Manitoba. Collected from a variety of sources, the majority of the holdings document the building of the Hudson Bay Railway and other aspects of life in Frontier School Division communities. Copies of specific items are available on loan to FSD teachers, students, community members and other "partners in learning" in Frontier School Division.

The FSD Photo Archive project was made possible by Manitoba Culture, Heritage & Tourism's Heritage Grants program. For more information on the Heritage Grants program, contact the Heritage Grants Advisory council or visit their website:

www.gov.mb.ca/chc/grants/hgp.html



Wash Day at Camp
Fort Nelson, MB, ca. 1914
#000124

(Source: Library & Archives Canada, PA122363)



"Indian" women, possibly family of guides/workers for proposed HBR route 1908-1909
#000063

(Source: Library & Archives Canada, PA147458)

How to access the FSD Photo Archive

Images, maps and documents housed in the FSD Photo Archives are managed by the Library Services Department. Copies of specific items are available on loan for up to four weeks at a time. To borrow, contact Library Services at (204) 775-9741. You may wish to check Library Services' online catalogue in advance, to ensure that a copy is available:

<http://library.frontiersd.mb.ca>

Additional information regarding the Photo Archive and its holdings will soon be available in all FSD school library reference sections as well as on the Social Studies/Native Studies Department website:

http://ss_ns.frontiersd.mb.ca

The website is currently undergoing a major restructuring. Please check back often for updates.

How to use the FSD Photo Archive

Documents, maps, and especially photographs are invaluable aids to teaching. History certainly comes alive with visual evidence.

As an example, teachers and students can readily use photographs to enhance study of the Hudson Bay Railroad, the economic development associated with it, and the communities along its route. Or, to be more specific, a study of Port Nelson, the original terminus of the railroad abandoned in favour of Port Churchill, can include available images to visually represent the port in its heyday. Other Northern Manitoba references, like the Frontier publication *Wabowden: Mile 137 on the Hudson Bay Railway*, can also be used in such studies.

Copies of photographs may be prominently displayed in the classroom, and students may also obtain digital copies to insert into their reports, PowerPoint presentations, or other assigned projects.

Samples of images that might be used are shown throughout this brochure.



No Sign of ice or storm damage,
bridge at Port Nelson, 1924
#000188

(Source: Library & Archives Canada, E004665679)